

LIFTS WITH THE BRAND



- ✓ Czech manufacturer of complete lifts
- ✓ Modern design
- ✓ Unique operating parameters
- ✓ Energy efficient lifts



Lifts

LIFT COMPONENTS, s.r.o.

Lifts with the brand

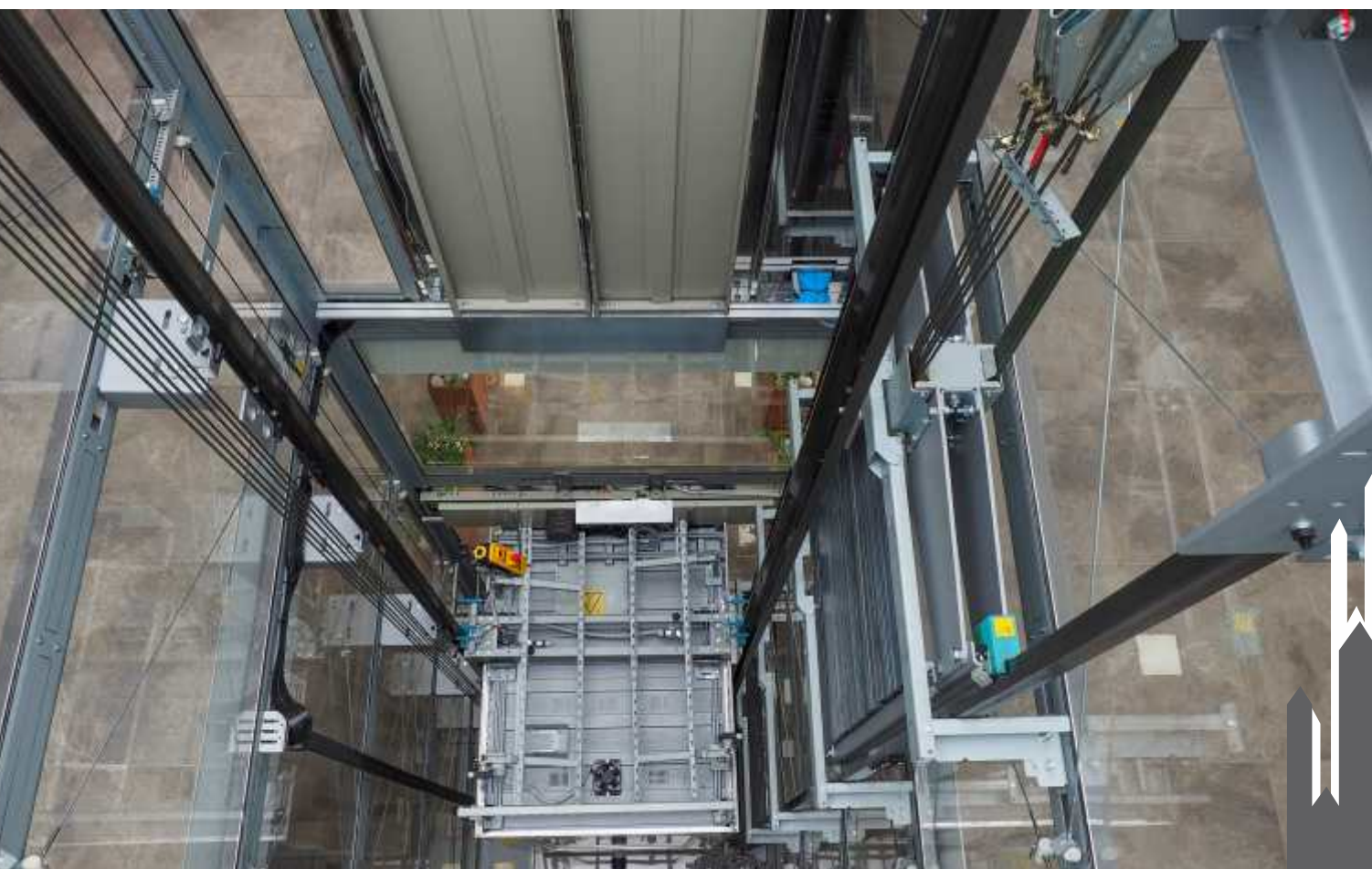
- 1.** Our philosophy
- 2.** Why Lifts with the brand LC are great choice?
 - a.** We are a Czech manufacturer with 20 years of experience
 - b.** Safe lifts
 - c.** Always close to You – wide sales network
 - d.** Modern lift technologies
 - e.** Modern lift = modern design
 - f.** Saving energy and the environment
 - g.** Hi-tech components
 - h.** Our own development
 - i.** Guarantee and life time period
- 3.** Lift portfolio
- 4.** LC Double Space
- 5.** LC Hydro Space
- 6.** LC Maxi, One Space
- 7.** LC MINI
- 8.** LC DoubleZero
- 9.** Steel elevator shaft LC Beta
- 10.** Special lifts
- 11.** Lift design (lift cabins)
- 12.** LC Elegant
- 13.** LC Exclusive
- 14.** LC Exclusive Glass
- 15.** LC Exclusive Colour Glass
- 16.** LC Classic
- 17.** Colour sample

„Company Lift Components s.r.o reserves the right to make changes and modifications to this catalogue without prior notice. Company is not responsible for errors in the press“



1. Our philosophy

We work conscientiously and honestly to get your attention and we will work the same way also in the future to keep it. Our business is clear, fair and transparent.



European quality

From precious technical project to the last component finalization, we always take care of quality.

European brand LC is our obligation to you.



2. Why are Lifts with the brand a great choice?

Choosing a lift just by a price and catalogues that promise the moon is often a superhuman task. Catalogues are made by advertising companies; anything could be promised in text.

How to know that company who offers lifts is a true manufacturer, and not just a composer of the cheapest components from doubtful destinations?

We often get this question from our customers and we will try to answer it in several points.

2.a We are a Czech manufacturer with 20 years of experience

Lift Components is a Czech manufacturer of lifts and platforms with over 20 years of experience. We do not only produce lifts, but we also do development and testing.

- **We are a stable company** - we have produced lifts for you in the Czech Republic for more than 20 years
- **100% Czech capital** - we cover all investments from our own resources.
- Lifts are completely **manufactured and tested** in our production plant in Karviná
- There are already more than 5000 **Lifts with the brand LC installed** in the Czech Republic and Slovakia.

We have obtained the Czech stability award certificate "AAA Platinum Excellent" - our company is one of the most economically stable companies in the Czech Republic and meets the strictest economic criteria



„Lifts with the LC brand are completely manufactured and tested in our production plant in Karviná”



Testing tower for lifts is a sign of a quality manufacturer

2.b

Safe lifts

- ✓ **Modern lift is under constant supervision** - but not under human supervision. All our lifts are remotely monitored mainly because of your safety. If a lift is remotely monitored it enables you to know exactly what your lift is doing right now, how many travels it does or whether there is some problem. Lift monitoring enables you to solve problems remotely without need to contact your maintenance company.
- ✓ All components of our lifts are pre-tested in our testing tower, which ensures high safety
- ✓ All lifts are equipped with voice communication in the cabin in case of emergency (immediate connection with the service company)
- ✓ In the case of a power outage, there is an **emergency descent** that allows people to rescue themselves quickly



* This rating provides an independent view of the financial and non-financial creditworthiness of the company. It expresses its current state, financial situation, including a prediction of future risk. The award declares that the evaluated company practices an open communication policy, provides enough information about its management or ownership structure.



2.c Always close to you – wide sales network

We are available in every region of the Czech Republic and Slovakia. Our sales network and cooperating companies covers the entire area of the Czech Republic and Slovakia. All our partners have authorization and trained staff. We cooperate with our partners in the area of lift installation, maintenance and service.



- ✓ **All our partners have authorization and trained staff.**
- ✓ **LC lift can be installed by large group of our partners.**
- ✓ **They are frequently trained.**
- ✓ **Easy and affordable service in all regions.**

Large number of companies from all over the Czech Republic and Slovakia are able to provide service and maintenance of our lifts. You are not dependent on only one supplier that determines the prices of service and spare parts.

2.d Modern lifts technologies



Our lifts are, thanks to Swiss manufacturing technologies, like a building kit which ensures their long lifetime period.

The most of the main parts of the lift, such as the car, the frame, the consoles and others, are galvanized, which greatly increases their lifetime period. Thanks to the used production technology and materials, the entire structure is light. If the components are not galvanized, they often look the same in one year as galvanized (ones) in ten years.

Robotic welding of LC Alfa and Beta steel elevator shafts – high precision. A revolutionary solution for covering the horizontal shaft profiles by PLALAM material - our own patented solution.

The heart of every lift is its machine, control and modern frame – Our lifts use gearless machines with permanent magnets (ZIEHL-ABEGG or SICOR) for new lifts and for lift modernizations, that do not have any gearbox or oil filling.

We use exclusively YASKAWA (Jp) inverters for lift control, which have special hardware developer for 3 million starts and more than 70 000 h of maintenance-free operation.



2.e Modern lift = modern design

- ✓ **Lift car is and always will be a big box, that is given. But there are many things you can choose to feel good in it:**
- ✓ Type of materials and its precious finishing
Colours and materials which should match with your building interior
- ✓ Designed items in your lift car – pushbuttons with lighting, handle, designed mirror, ceiling with a LED lighting
- ✓ Custom made features such as entrance ambient lighting, music in your lift car, touchless buttons and more



LC *Classic* LC *Elegant* LC *Exclusive* LC *Exclusive* GLASS LC *Exclusive* ColorGlass

We have 5 series of lift cabins in modern design, dozens of lights, accessories and hundreds of colour combinations.

Our cabins are galvanized on both sides, which significantly increases their life period.

Crystal surfaces, precise lines, perfect manufacture and timeless looks.



„You are welcome to visit our new Lift Salon, where you can view all our products, sample book, materials and take a ride in our lifts.“

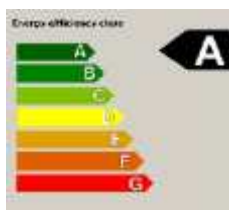


2.f Saving energy and the environment

- ✓ Our lifts have low power consumption (stand by mode up to 60W)
- ✓ Not only with a switchboard, but also with the inverter, displays and door operator have an energy saving mode
- ✓ 40% of the energy needed to produce your elevator is made of solar energy
- ✓ For each elevator, we will estimate the annual cost of electricity.

LC EKO Drive is a system that automatically turns to sleep mode all appliances (displays, buttons, LED lightning and others) after some period of time. This system also turns off switchboard and inverter.

We have our own 240 kW solar power plant.




We have been dedicated to green electricity since 2010.



2.g Hi-tech components

We complement our own production with top class components of leading European manufacturers.

Brand  is a guarantee of quality.

"No component from doubtful destinations can be found with us"



Our long-term partner, one of the largest and best manufacturers of gears in Europe.



Part of the multinational Tecnolama group with yearly production of over 500,000 doors that are delivered to 90 countries around the world.



Manufacturer of hydraulic systems for lifts. 30 years on Czech and Slovakia market, thousands of installations, service centres.



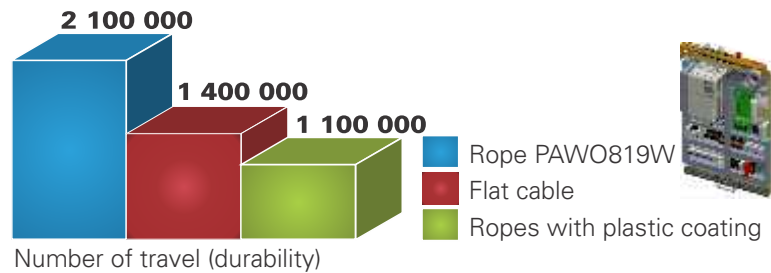
Steel ropes Gustav Wolf, producer of special ropes for lifts with a long service life.

Lasts 2 times longer than plastic coated ropes or belts.





Life cycle of ropes and flat cables



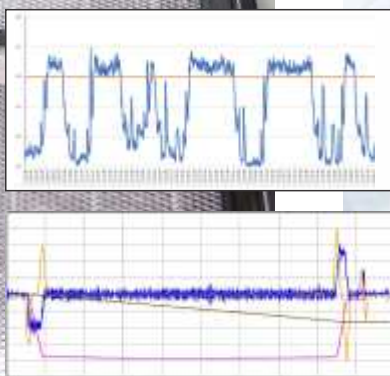
- ✓ The graph shows the service life of the load-bearing means, it is evident that a special rope PAWO 819W guarantees the highest number of cycles, up to 2,100,000, with an average of 100,000 rides per year. Our lift LC Maxi 1050 can operate for up to 20 years without the need to replace the ropes.
- ✓ Our lifts are equipped with a frequency inverter for elevators from the world's largest inverter manufacturer Yaskawa (Japan).
- ✓ The cheapest lifts are usually equipped with equally cheap components from doubtful destinations, which sooner or later affects the service life and failure rate of the lift. In addition, spare parts are then almost unavailable!

2.h

Our own development

All our lifts go through testing to meet the high demands on safety, quality and reliability.

We develop and test lifts in the test tower of our head-quarter in Karviná. Our team of specialists take care of the development of new technologies.



During the testing, we are focused on permitted noise levels in protected areas.

"The development of lifts is very important. It is not enough just to buy and assembly at the customer"



2.i

Guarantee and life time period

Our standard guarantee is **36 months**. We can also offer a 60-months extension of warranty for all major components.

Spare parts will be available for your lift for at least 10 years.

LC Guarantee Inclusive

"Cheapest lifts with components from doubtful destinations mean higher failure rate, short life and on the top of that spare parts are almost unavailable later on!"

You no longer have to worry about unexpected expenses for worn parts with LC Guarantee Inclusive.

A simple one-time payment ensures you the necessary spare parts free of charge for up to 60 months or up to 500,000 rides.

LC monitoring 365 is automatically included in this service. You can watch your lift from anywhere at any time.

Cheapest lift parts put together can't be considered as lift from manufacturer!



3. LC lifts portfolio

Lifts that adapt to your requirements as much as possible.

We offer lifts to residential buildings, hospitals, company headquarters, family houses, hotels and listed buildings (of historic interest). You can choose a right lift for you below.

LC DOUBLESpace



LC DoubleSpace

- ✓ **Rope lift with machine room**
- ✓ Load capacity from 320 to 2000 Kg
- ✓ For apartment buildings and hospitals
- ✓ For buildings with more floors
- ✓ Modernization

LC HYDROSpace



LC HydroSpace

- ✓ **Hydraulic lift**
- ✓ Load capacity from 320 to 1600 Kg
- ✓ For apartment buildings lower floors (up to 6...)
- ✓ For apartment buildings, hotels and office buildings

LC maxi



LC Maxi

- ✓ **Rope lift with machine room**
- ✓ Load capacity from 350 to 1050 Kg
- ✓ Lift to limited space
- ✓ For new buildings hospitals with high day traffic
- ✓ For houses where there is not enough space for the machine room

LC mini



LC Mini

- ✓ **Hydraulic platform, that looks like a classic lift**
- ✓ Load capacity 250, 350 and 500 kg
- ✓ To family houses, corporate residences, surgeries or guest houses
- ✓ Low-floor buildings (up to 4 floors)
- ✓ Low price, low energy consumption

LC DOUBLEZero



LC DoubleZero

- ✓ **Specially designed lifts for houses without a lift and not only for them**
- ✓ No need for machine room (mini machine box in lowest or highest station beside a lift)
- ✓ Ready for installation into our steel elevator shaft LC Beta
- ✓ Apartment buildings with 3,4 or 5 floors

SPECIAL LIFT



Special lift

- ✓ **Lifts specialty developed for you**
- ✓ Lifts with half-round glass wall
- ✓ Glass lifts „aquarium” type
- ✓ Reconstruction of freight elevators
- ✓ Lift with openable ceiling

Rope lift with machine room

How this lift works:

- ✓ The lift cabin is suspended on the ropes and is driven by the machine over the traction sheave.
- ✓ Weight of the cabin and its load is balanced by the counterweight.
- ✓ Machine is located in separate machine room.

Where to fit:

- ✓ Lift for apartment buildings
- ✓ Lift for hospitals
- ✓ Office buildings
- ✓ All buildings with more floors and high daily traffic
- ✓ Old lift modernization

Parameters

- ✓ Load capacities from 320 to 2000 kg
- ✓ Speed 1.0 m / s to 1.6 m / s
- ✓ Number of stations from 2 to 16
- ✓ Maximum travel 35 m
- ✓ Door width 700mm to 1300mm
- ✓ Geared or gearless machine
- ✓ Cabin from 800x1200mm to 1400x2400mm
- ✓ Shaft from 1040x1420mm to 2300x2800mm

Advantages

- ✓ Higher speed
- ✓ Higher number of floors (up to 16)
- ✓ Quiet lift operation due to separate machine room
- ✓ Long life due to galvanized parts
- ✓ Steel ropes last up to 2 times longer than belts

Parameters	LC-DoubleSpace 450	LC-DoubleSpace 450	LC-DoubleSpace 450	LC-DoubleSpace 450	LC-DoubleSpace 550	LC-DoubleSpace 550
LOAD	450	450	450	450	450	550
PERSONS	6	6	6	6	6	7
LIFT TRAVEL [m]	25*	25*	25*	25*	25*	25*
NUMBER OF STATIONS	max. 16	max. 16	max. 16	max. 16	max. 16	max. 16
SPEED [m/s]	1,0**	1,0**	1,0**	1,0**	1,0**	1,0**
TRIPS [per hour]	240	240	240	240	240	240
ROPING	1:1	1:1	1:1	1:1	1:1	1:1
SHAFT HEAD [mm]	3315 (min. 2760)	3315 (min. 2760)	3315 (min. 2760)	3315 (min. 2760)	3315 (min. 2760)	3315 (min. 2760)
PIT [mm]	1050 (min. 655)	1050 (min. 655)	1050 (min. 655)	1050 (min. 655)	1050 (min. 655)	1050 (min. 730)
SHAFT WIDTH [mm]	1040	1050	1040	1200	1500	1200
SHAFT DEPTH [mm]	1500	1500 (1500***)	1500 (1500***)	1500	1500	2200 (2200***)
CABIN WIDTH [mm]	800	1000	800	800	1150	800
CABIN DEPTH [mm]	1250	1250 (1170***)	1250 (1170***)	1250	1150	1850 (1850***)
FRAME TYPE	TLM9	TLM9	TLM9	TLM9	TLM9	TLM10
MACHINE TYPE	gear-ANO	gear-ANO	gear-ANO	gear-ANO	gear-ANO	gear-ANO
	gearless-ANO	gearless-ANO	gearless-ANO	gearless-ANO	gearless-ANO	gearless-ANO
ENGINE POWER [kW]/ln(A)	gear 4kW/10A	gear 4kW/10A	gear 4kW/10A	gear 4kW/10A	gear 4kW/10A	gear 6kW/13A
	gearless 2,7kW/9,8A	gearless 2,7kW/9,8A	gearless 2,7kW/9,8A	gearless 2,7kW/9,8A	gearless 2,7kW/9,8A	gearless 3,8kW/13A
COUNTER WEIGHT	back concrete	on side concrete	on side concrete	on side concrete	on side concrete	back concrete
	back concrete	on side concrete	on side concrete	on side concrete	on side concrete	back concrete
ROPES	4x10 mm	4x10 mm	4x10 mm	4x10 mm	4x10 mm	5x10 mm
	7x6,5 mm	7x6,5 mm	7x6,5 mm	7x6,5 mm	7x6,5 mm	10x6,5 mm
DOOR WIDTHxHEIGHT [mm]	700/750/800x2000	700/750/800x2000	700/750/800x2000	700/750/800x2000	700/750/800x2000	700/750/800x2000
CABIN DOOR	AUTOMAT	AUTOMAT	AUTOMAT	AUTOMAT	AUTOMAT	AUTOMAT
SHAFT DOOR	AUTOMAT	AUTOMAT	AUTOMAT	AUTOMAT	AUTOMAT	AUTOMAT
	SEMI AUTOMAT/AUTOMAT	SEMI AUTOMAT/AUTOMAT	SEMI AUTOMAT/AUTOMAT	SEMI AUTOMAT/AUTOMAT	SEMI AUTOMAT/AUTOMAT	SEMI AUTOMAT/AUTOMAT
	2PT, 2PC	2PT, 2PC	2PT, 2PC	2PT, 2PC	2PT, 2PC	2PT, 2PC
	3PT, 4PC	3PT, 4PC	3PT, 4PC	3PT, 4PC	3PT, 4PC	3PT, 4PC

Parameters	LC-DoubleSpace 650	LC-DoubleSpace 800	LC-DoubleSpace 1000	LC-DoubleSpace 1250	LC-DoubleSpace 1600	LC-DoubleSpace 2000
LOAD	650	800	1000	1250	1600	2000
PERSONS	8	10	13	16	21	26
LIFT TRAVEL [m]	30*	35*	35*	25*	25*	25*
NUMBER OF STATIONS	max. 16	max. 16	max. 16	max. 16	max. 16	max. 16
SPEED [m/s]	1,0**	1,0**	1,0**	1,0**	1,0**	1,0**
TRIPS [per hour]	240	240	240	240	240	240
ROPING	1:1	1:2	1:2	1:2	1:2	1:2
SHAFT HEAD [mm]	3315 (min. 2650)	3715 (min. 2800)	3715 (min. 2800)	3715 (min. 3315)	3715 (min. 3315)	3715 (min. 3315)
PIT [mm]	1050 (min. 730)	1050 (min. 700)	1050 (min. 700)	1050 (min. 950)	1050 (min. 950)	1050 (min. 950)
SHAFT WIDTH [mm]	1200	1800	2100	2100	2300	2400
SHAFT DEPTH [mm]	2200 (2200***)	2400 (2400***)	2400 (2400***)	2700	2800	3100
CABIN WIDTH [mm]	800	1020	1020	1200	1400	1500
CABIN DEPTH [mm]	1850 (1850***)	2000 (1840***)	2000 (1840***)	2300	2400	2700
FRAME TYPE	TLM10	TLM11-maxi	TLM11-maxi	TLM16-SK	TLM16-SK	TLM20-SK
MACHINE TYPE	gear-ANO	gear-NE	gear-NE	gear-NE	gear-NE	gear-NE
	gearless-NE	gearless-ANO	gearless-ANO	gearless-ANO	gearless-ANO	gearless-ANO
ENGINE POWER [kW]/ln(A)	gear 5,5kW/17A	-	-	-	-	-
	-	gearless 8 kW/21A	gearless 9 kW/21A	gearless 9 kW/20,5A	gearless 12 kW/26A	gearless 14 kW/42A
COUNTER WEIGHT	back concrete	on side concrete	on side concrete	on side concrete	on side concrete	on side concrete
	-	-	-	-	-	-
ROPES	-	-	-	-	-	-
	6x10 mm	8x6,5 mm	8x6,5 mm	8x8 mm	10x8 mm	10x8 mm
DOOR WIDTHxHEIGHT [mm]	700/750/800x2000	800/900x2000	800/900x2000	1100/2000x2100	1300/2000x2100	1300/2000x2100
CABIN DOOR	BUS/AUTOMAT	AUTOMAT	AUTOMAT	AUTOMAT	AUTOMAT	AUTOMAT
SHAFT DOOR	AUTOMAT	2 PT	2 PT	2 PT	2 PT	2 PT
	SEMI AUTOMAT/AUTOMAT					
	2PT, 2PC					
	3PT, 4PC					

*in case of higher travel please contact us

** nominal speed 1,0 m/s (max 1,6 m/s)

*** two entrances cabin

LC DOUBLES^{Space}

We are Czech manufacturer of lifts with a over 20 years of experience

Ideal lift for higher buildings
Lift class 1 and 2 (for over 150 rides per day) and class 3 (and more)
For apartment buildings, hospitals, modernizations



Lift control board with VEGA control card according to EN81-20

- ✓ Yaskawa frequency inverter (Japan)
- ✓ Device that protects lift cabin against unintentional movements
- ✓ Electrical components Wieland, Schneider, Weidmüller

Automatic or manual door

- ✓ You can choose the color to match your lift with interior



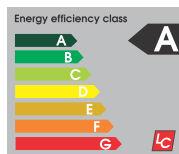
Modern lift = modern design

- ✓ We have 5 series of lift cabins in modern design, dozens of lights, accessories and hundreds of colour combinations.
- ✓ Our cabins are galvanized on both sides, which significantly increases their life period.
- ✓ Crystal surfaces, precise lines, perfect manufacture and timeless looks.



Saving energy and the environment

- ✓ Our lifts have low power consumption
- ✓ Lifts are equipped with system that automatically turns to sleep mode all appliances (displays, buttons, LED lighting and others) after some period of time. This system also turns off switchboard and converter



Standard guarantee is 36 months

- ✓ We can also offer an extension in the form of a 60-month warranty.

Separate engine room above the shaft

LC Monitoring 365

- ✓ Monitor your lift from anywhere and at anytime
- ✓ Your lift is under constant surveillance (you know exactly what your lift does right now and when it needs maintenance)
- ✓ Significantly faster problem solving (most defects can be resolved remotely without need for a personal visit)



Gearless machines SICOR and Ziehl-Abegg

- ✓ Gearless machines do not have any gearbox or oil filling
- ✓ One of the best lift machines in Europe
- ✓ High efficiency (80-85%) and low noise



Most of the lift main parts are galvanized, which significantly increases their lifetime period

- ✓ Lift cabin, frame, consoles and others

Steel ropes Gustav Wolf

- ✓ Long service life
- ✓ Lasts 2 times longer than elevator travel cables

Modern lifts technologies

- ✓ Lifts are made like a building kit, which ensures their long lifetime
- ✓ LC Lifts are made by top-class Swiss Bystronic machines



Always close to you – wide sales network



Hydraulic lift for low buildings (max. to the 6 floors)

How this lift works:

- ✓ The lifting power is supplied by an electrically driven aggregate.
- ✓ The aggregate transports hydraulic oil to the hydraulic piston.
- ✓ The lift is lifted by the hydraulic piston.
- ✓ When the lift is going down, the power consumption is 0.
- ✓ The machine room can be anywhere near the shaft.
- ✓ If there is not enough space for the engine room, the machine can be placed in the box.

Where to fit:

- ✓ Ideal lift for low buildings up to 6 stations with lower traffic
- ✓ Lift for low apartment buildings
- ✓ Administration buildings
- ✓ Hotels and guesthouses
- ✓ Modernization of your current lift

Parameters

- ✓ Load capacities from 320 to 1600 kg
- ✓ Speed 0,6 m/s
- ✓ Number of stations from 2 to 6
- ✓ Maximum travel 20 m
- ✓ Door width 700 mm to 1300 mm
- ✓ Hydraulic engine Moris
- ✓ Cabin from 900x1500 mm to 1400x2400 mm
- ✓ Shaft from 1450x1420 mm to 2250x2770 mm

Advantages

- ✓ Simple, plain, quiet lift
- ✓ The hydraulic lift is quieter than the rope lift
- ✓ Green efficient lift
- ✓ Easy maintenance (even non-professional can free passengers)
- ✓ It uses the shaft space better than the rope lift
- ✓ Long life due to galvanized parts

Parameters	LC OH 320	LC OH 450	LC OH 630	LC OH 1000	LC OH 1250	LC OH 1600
LOAD	320	450	630	1000	1250	1600
PERSONS	4	6	8	13	16	21
LIFT TRAVEL [m]	20	20	20	20	20	20
SPEED [m/s]	0,6	0,6	0,6	0,6	0,6	0,6
TRIPS [per hour]	45	45	45	45	45	45
ROPES	1:2	1:2	1:2	1:2	1:2	1:2
SHAFT HEAD [mm]	3265 (min. 2500)	3265 (min. 2500)	3265 (min. 2970)	3265 (min. 2970)	3265 (min. 2970)	3265 (min. 2970)
PIT [mm]	1020 (min. 700)	1020 (min. 700)	1020 (min. 700)	1110 (min. 850)	1405 (min. 1020)	1405 (min. 1020)
SHAFT WIDTH [mm]	1450	1500	1600	1620	1900	2250
SHAFT DEPTH [mm]	1500 / 1680*	1650 / 1830*	1800 / 1980*	2500 / 2680*	2700 / 2880*	2770 / 2980*
NUMBER OF STATIONS	max.16	max.16	max.16	max.16	max.16	max.16
CAR WIDTH [mm]	900	1000	1100	1100	1200	1400
CAR DEPTH [mm]	1100	1250	1400	2100	2300	2400
FRAME TYPE	RVD3	RVD5	RHN-EC	RHN3	RHN20	RHN20
MACHINE TYPE	Moris	Moris	Moris	Moris	Moris	Moris
ENGINE POWER [kW]/In(A)	6kW / 15,4A	7,5kW / 19A	9,5kW / 23A	15kW / 37A	18,5kW / 44A	22,5kW / 52A
ROPES	4x8,9,10 mm	4x8,9,10 mm	3x11 mm	5x11 mm	5x12,5 mm	6x12,5 mm
DOOR WIDTHxHEIGHT [mm]	800x2000	800x2000	800/900x2000/2100	900x2000/2100	1100x2000/2100	1300x2000/2100
CABIN DOOR	AUTOMAT 2T	AUTOMAT 2T	AUTOMAT 2T	AUTOMAT 2T	AUTOMAT 2T	AUTOMAT 2T
SHAFT DOOR	AUTOMAT 2T	AUTOMAT 2T	AUTOMAT 2T	AUTOMAT 2T	AUTOMAT 2T	AUTOMAT 2T

LC HydroSpace

** two entrances cabin

LC HYDROspace

We are Czech manufacturer of lifts
with 20 years of experience

**Ideal lift for low buildings up to 6 floors
(about 150 rides per day).**

For apartment building, hotels or guesthouses.
Lift class 1 and 2.

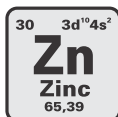


Lift control board with VEGA control card according to EN81-20

- ✓ Yaskawa frequency converter (Japan)
- ✓ Device that protects lift cabin against unintentional movements
- ✓ Electrical components Wieland, Schneider, Weidmüller

Most of the lift main parts are galvanized, which significantly increases their lifetime period

- ✓ Lift cabin, frame, consoles and others



LC Monitoring 365

- ✓ Monitor your lift from anywhere and at anytime
- ✓ Your lift is under constant surveillance (you know exactly what your lift does right now and when it needs maintenance)
- ✓ Significantly faster problem solving (most defects can be resolved remotely without need for a personal visit)



The machine room can be anywhere near the lift.

If you don't have space, you can place the drive in the box next to the lift.

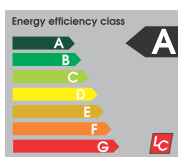
Hydraulic drive MORIS with more than 20 years of tradition

- ✓ Thousands of installations across Europe.
- ✓ Cabin is raised by lift piston.
- ✓ When going downwards, the energy consumption is almost 0.



Energy-saving lift

- ✓ For low buildings up to 5 stations with less operation, a hydraulic elevator is more economical than a cable elevator
- ✓ 40% of the energy needed to manufacture the lift is from solar energy
- ✓ Saving mode is now equipped on the switchboard but also on the door operator and display



Modern lift = modern design

- ✓ We have 5 series of lift cabins in modern design, dozens of lights, accessories and hundreds of colour combinations.
- ✓ Our cabins are galvanized on both sides, which significantly increases their life period.
- ✓ Crystal surfaces, precise lines, perfect manufacture and timeless looks.



Swiss production technology

- ✓ Lift is made by top-class Swiss Bystronic group machines
- ✓ laser and press brakes Bystronic, sheet metal perforation Trupunch



Rope lift without machine room Into a limited space**How this lift works:**

- ✓ The machine is located directly in the shaft
- ✓ The lift cabin is suspended on ropes
- ✓ The elevator machine drives the cabin over the traction sheave
- ✓ The weight of the cabin and its load is balanced by the counterweight
- ✓ This lift doesn't need a machine room

Where to fit:

- ✓ Lift for objects where there is no enough space for the machine room
- ✓ Lift for houses with limited space for lift
- ✓ Monument buildings
- ✓ Residential houses
- ✓ Corporate Headquarters
- ✓ Buildings with higher daily traffic.

Parameters

- ✓ Load capacities from 350 to 1600 kg
- ✓ Speed 1.0 m / s to 1.6 m / s
- ✓ Number of stations from 2 to 12
- ✓ Maximum travel 35 m
- ✓ Door width 700mm to 900mm
- ✓ Gearless machine
- ✓ Cabin from 950x1100mm to 1400x2400mm
- ✓ Shaft from 1450x1470mm to 2400x3000mm

Advantages

- ✓ Significant space savings
- ✓ Silent lift operation
- ✓ Lower power consumption due to highly efficient gearless machines
- ✓ Long life due to galvanized parts
- ✓ Steel ropes last up to 2x longer than belts

Parameters	LC MAXI 350	LC MAXI 450	LC MAXI 650	LC MAXI 1050	LC One Space 1250	LC One Space 1600	LC One Space 2000
LOAD	350	450	650	1050	1250	1600	2000
PERSONS	4	6	8	14	16	21	26
LIFT TRAVEL [m]	25*	25*	25*	20*	25*	25*	25*
SPEED [m/s]	1,0**	1,0**	1,0**	1,0**	1,0**	1,0**	1,0**
TRIPS [per hour]	240	240	240	240	240	240	240
ROPING	1:2	1:2	1:2	1:2	1:2	1:2	1:2
SHAFT HEAD [mm]	3350 (min.2750)	3350 (min.2750)	3350 (min.2750)	3350 (min.2750)	3750 (min.3500)	3750 (min.3500)	3750 (min.3500)
PIT [mm]	1050 (min.500)	1050 (min.500)	1050 (min.500)	1100 (min.700)	1250 (min.1100)	1250 (min.1100)	1250 (min.1100)
SHAFT WIDTH [mm]	1450	1550	1600	1650	2100	2300	2400
SHAFT DEPTH [mm]	1470/1680***	1620/1830***	1770/1980***	2450/2660***	2700/2880***	2800/2980***	3100/3280***
NUMBER OF STATIONS	max. 16	max. 16	max. 16	max. 7	max. 16	max. 16	max. 16
CABIN WIDTH [mm]	900	1000	1100	1100	1200	1400	1500
CABIN DEPTH [mm]	1100	1250	1400	2100	2300	2400	2700
FRAME TYPE	TLM10-MAXI	TLM10-MAXI	TLM10-MAXI	TLM10-MAXI	TLM16-SK	TLM16-SK	TLM20-SK
MACHINE TYPE	gearless	gearless	gearless	gearless	gearless	gearless	gearless
ENGINE POWER [kW]/ln(A)	2,9 kW/8,5 A	3,8 kW/11,5 A	4,8 kW/13,5 A	7 kW/19,5 A	9 kW/23 A	12 kW/29,5 A	12 kW/36,5 A
ROPES	4x6,5 mm	5x6,5 mm	5x6,5 mm	10x6,5 mm	10x8 mm	10x8 mm	10x8 mm
DOOR WIDTHx HEIGHT [mm]	800	800	800 až 900	800 až 900	1100	1100-1300	1100-1300
DOOR CABIN	AUTOMAT 2T	AUTOMAT 2T	AUTOMAT 2T	AUTOMAT 2T	AUTOMAT 2T	AUTOMAT 2T	AUTOMAT 2T
SHAFT DOOR	AUTOMAT 2T	AUTOMAT 2T	AUTOMAT 2T	AUTOMAT 2T	AUTOMAT 2T	AUTOMAT 2T	AUTOMAT 2T

* in case of higher travel please contact us
 ** nominal speed 1,0 m/s (max 1,6 m/s)
 *** two entrances cabin





Lift control board with VEGA control card according to EN81-20

- ✓ Yaskawa frequency inverter (Japan)
- ✓ Device that protects lift cabin against unintentional movements
- ✓ Electrical components Wieland, Schneider, Weidmüller

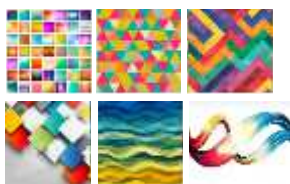
Swiss production technology

- ✓ Lift is made by top-class Swiss Bystronic group machines
- ✓ Laser and press brakes Bystronic, sheet metal perforation Trupunch
- ✓ The construction of the lift is galvanized, which guarantees a long service life



Own development and testing

- ✓ All lifts go through demanding quality, reliability and safety testing
- ✓ We develop and test lifts in our test tower in Karviná



Modern lift = modern design

- ✓ We have 5 series of lift cabins in modern design, dozens of lights, accessories and hundreds of colour combinations.
- ✓ Our cabins are galvanized on both sides, which significantly increases their life period.
- ✓ Crystal surfaces, precise lines, perfect manufacture and timeless looks

Standard guarantee is 36 months

- ✓ We can also offer an extension in the form of a 60-month warranty.



LC Monitoring 365

- ✓ Monitor your lift from anywhere and at anytime
- ✓ Your lift is under constant surveillance (you know exactly what your lift does right now and when it needs maintenance)
- ✓ Significantly faster problem solving (most defects can be resolved remotely without need for a personal visit)



Gearless machines SICOR and Ziehl-Abegg

- ✓ Gearless machines do not have any gearbox or oil filling
- ✓ One of the best lift machines in Europe
- ✓ High efficiency (80-85%) and low noise

Steel ropes Gustav Wolf

- ✓ Long service life
- ✓ Lasts 2 times longer than elevator travel cables

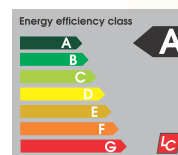
Automatic or manual door

- ✓ You can choose the color to match your lift with interior



Saving energy and the environment

- ✓ Our lifts have low power consumption
- ✓ Lifts are equipped with system that automatically turns to sleep mode all appliances (displays, buttons, LED lightning and others) after some period of time.
- ✓ This system also turns off switchboard and inverter.



Always close to you – wide sales network

- ✓ Our business network and cooperating companies covers the entire area of the Czech Republic and Slovakia

Hydraulic platform for family houses**How this lift works:**

- ✓ It is a hydraulic platform, which is indistinguishable from lift
- ✓ LC mini can replace regular lift in full range
- ✓ The power is supplied by an electrically driven power unit
- ✓ When LC mini goes down, the power consumption is almost 0
- ✓ If there is not enough space for the engine room, a machine can be placed in the box

Where to fit:

- ✓ Ideal for family houses
- ✓ It is suitable for corporate residences, guest houses or hotels
- ✓ Low buildings (up to 4 floors)

Parameters

- ✓ Load capacities from 250 to 500 kg
- ✓ Speed 0.15 m / s
- ✓ Number of stations from 2 to 5
- ✓ Maximum travel 12 m
- ✓ Door width 600mm to 1000mm
- ✓ Hydraulic drive Moris
- ✓ Cabin from 900x750mm to 1100x1800mm
- ✓ Shaft from 900x1420mm to 1600x2000mm

Advantages

- ✓ Significantly lower price
- ✓ Very low energy consumption
- ✓ Annual consumption of 250 kW (at 12 500 travels)
- ✓ Installation takes only 5 – 10 days
- ✓ LC mini does not require expensive construction work
- ✓ Easy operation
- ✓ TÜV type certificate

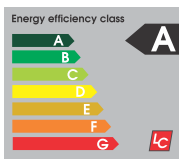
Parameters	LC MINI 250	LC MINI 320
LOAD	250	320
PERSONS	3	4
LIFT TRAVEL [m]	12,5	12,5
SPEED [m/s]	0,15	0,15
TRIPS [per hour]	25	25
ROPES	1:2	1:2
SHAFT HEAD [mm]	min. 2500	min. 2500
PIT [mm]	min. 185	min. 250
SHAFT WIDTH [mm]	900 až 1300	1300 až 1500
SHAFT DEPTH [mm]	900 až 1350	1250 až 1550
NUMBER OF STATIONS	max. 4	max. 4
CABIN WIDTH [mm]	600 až 900	900 až 1100
CABIN DEPTH [mm]	750 až 1200	1100 až 1400
FRAME TYPE	RVD2	RVD3
MACHINE TYPE	Moris	Moris
ENGINE POWER [kW]/ln(A)	1,8kW - 2,2kW	2,2kW
ROPES	2x8,9,10 mm	4x8,9,10 mm
DOOR WIDTHxHEIGHT [mm]	600 až 900	800 až 1000
CABIN DOOR	no car door/automatic	no car door/automatic
SHAFT DOOR	semi automatic/automatic	semi automatic/automatic

Parameters	LC MINI 500	LC MINI INDUSTRY
LOAD	500	500
PERSONS	6	6
LIFT TRAVEL [m]	12,5	12,5
SPEED [m/s]	0,15	0,2
TRIPS [per hour]	25	25
ROPES	1:2	1:2
SHAFT HEAD [mm]	min. 2500	min. 2800
PIT [mm]	min. 350	min. 500
SHAFT WIDTH [mm]	1400 až 1500	1600
SHAFT DEPTH [mm]	1450 až 1550	2000
NUMBER OF STATIONS	max. 4	max. 4
CABIN WIDTH [mm]	1000 až 1100	1100
CABIN DEPTH [mm]	1300 až 1400	1800
FRAME TYPE	RVD5	RHN EC
MACHINE TYPE	Moris	Moris
ENGINE POWER [kW]/ln(A)	2,2kW	2,2kW
ROPES	2x8,9,10 mm	3x11 mm
DOOR WIDTHxHEIGHT [mm]	800 až 1000	1000
CABIN DOOR	no car door/automatic	no car door/automatic
SHAFT DOOR	semi automatic/automatic	semi automatic/automatic





We are Czech manufacturer of lifts with a 20-year tradition



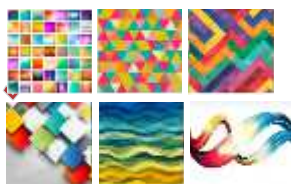
Low energy consumption

- ✓ Power consumption only 1.1 – 2.2 kW
- ✓ Annual consumption of only 250 kWh
- ✓ Energy class A



Top lift control with the VEGA

- ✓ Electro components Wieland, Schneider, Weidmüller



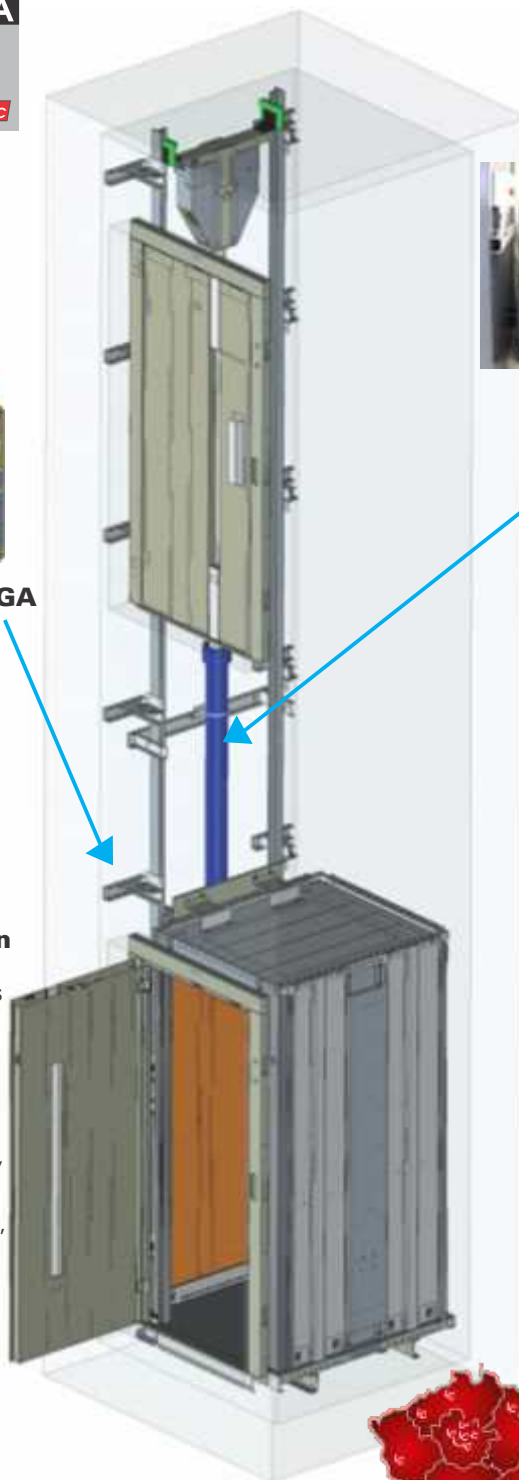
Modern lift = modern design

- ✓ We have 5 series of lift cabins in modern design, dozens of lights, accessories and hundreds of colour combinations.
- ✓ Our cabins are galvanized on both sides, which significantly increases their life period.
- ✓ Crystal surfaces, precise lines, perfect manufacture and timeless looks



Standard guarantee is 36 months

- ✓ We can also offer an extension in the form of a 60-month warranty.



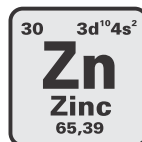
The machine room can be anywhere near the lift.

If you don't have space, you can place the unit in the box next to the lift.



Hydraulic drive MORIS with more than 20 years of tradition

- ✓ Thousands of installations across Europe.
- ✓ Cabin is raised by lift piston
- ✓ Two-speed aggregate in the standard price



Most of the lift main parts are galvanized, which significantly increases their lifetime period

- ✓ Lift cabin, frame, consoles and others



LC mini has certificate type TÜV

- ✓ Which ensures safety and a high standard of performance



Always close to you – wide commercial network

- ✓ Easy and affordable service in all regions
- ✓ Our business network and cooperating companies covers the entire area of the Czech Republic and Slovakia



Rope lift specially designed lift for houses without a lift (but not only for them)

Currently, the number of lifts installed in three to five floors houses, where the elevator has never been before, is growing very fast.

At the same time, more and more people are interested in lifts for family houses. People care more for elderly and immobile citizens. The demand for lifts to these homes increases.

If you have an apartment building without a lift, you certainly have to overcome so many steps per day, before you reach your home. Everything would be easier if you had a lift. You'd just press a button and you'd be in your apartment easily.

✓ **LC DoubleZero** is designed especially for houses without a lift (but not only for them).

✓ **LC DoubleZero** is ready for installation into our **steel elevator shaft LC Beta** as well as into brick shaft.

Advantages of this solution

- ✓ **No need for machine room** – LC DoubleZero has a mini machine room in lowest or highest station beside a lift.
- ✓ **Head of a shaft is only 2550 mm** - it fits even in very limited space
- ✓ **Minimum pit dimension is only 500 mm**
- ✓ This lift is also suitable for lifts in staircase mirror

Where to place lift in your house?

1. Indoor lift in a free space in the house

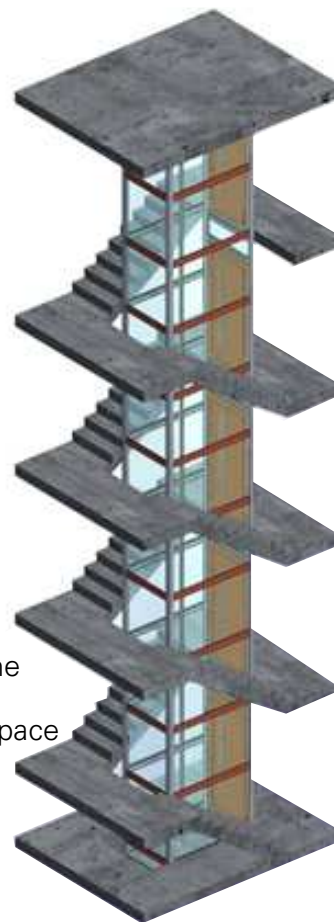
In apartment buildings with approximately 4 floors usually there is a free space inside a staircase (with dimensions app. 1250 mm x 2200 mm) or free lift shaft (about 1100 mm x 2000 mm).

This solution is specially developed to fit inside a staircase.

2. Lift as an outdoor extension of a house

This solution is also suitable for an outdoor extension of a house in a brick or steel elevator shaft.

In that case you are not limited by space and you can choose a lift exactly according to your wishes.



Indoor lift inside of a staircase



Outdoor steel elevator shaft



LC DoubleZero

– rope lift with side mini machine room

Parameters

- ✓ Load capacity up to 450 kg
- ✓ Speed 1.0 m/s
- ✓ Lift travel 25 m
- ✓ Door width 800 mm
- ✓ Standard lift cabin 800x1550 mm
- ✓ Cabin with two entrances 800x1540 mm
- ✓ Steel elevator shaft inside a staircase 1250x2200mm
- ✓ 100% compatibility with steel elevator shaft LC Beta

Advantages

- ✓ Mini engine room beside lift in the lowest or highest floor will save you a space
- ✓ Head of a shaft only 2550 mm
- ✓ Minimum pit dimension 500 mm
- ✓ Higher speed
- ✓ Long lifetime period life thanks to galvanized parts
- ✓ This lift has LC monitoring 365 – You can watch your lift at anytime and from anywhere (remote access)



Outdoor steel elevator shaft

Complete delivery of a lift together with steel elevator shaft from one manufacturer ensures 100% mutual compatibility of both components



Indoor lift inside of a staircase



9.

Steel elevator shaft **LCBeta**

Put your lift in a steel elevator shaft with glass profiles Assembled (bolted) steel elevator shaft from thin-walled profiles, certified according to EN 1090-1+A1, EN 1090-2. Simple installation without welding.

- ✓ Installation including glass panels - approximately 4 hours for 1 floor
- ✓ A revolutionary solution for covering horizontal shaft profiles from PLALAM material
- ✓ Installation of fillings from the inside of the shaft and from the outside of the shaft
- ✓ Glass panels or fermacell fibre boards
- ✓ 100% compatibility with all LC Lifts
- ✓ Construction material: EXC2 / Steel S235JR, S355JR, open bent profiles

Main advantages of LCBeta:

- ✓ Outstanding design - glass profiles
- ✓ Certified according to ČSN EN 1090-1+A1, ČSN EN 1090-2
- ✓ Simple and quick installation without welding at the place of installation
- ✓ No grinding and no noise during installation
- ✓ Delivered as a building kit with large accuracy of individual parts

Complete delivery of lift with steel elevator shaft from one manufacturer, ensures 100% mutual compatibility of both parts.

Two variants:

Laminated safety glass

- ✓ Laminated safety glass 4+4+0,76mm
- ✓ LC glazing system with anti-vibration seal
- ✓ Installation of each glass can be done from the inside for from the outside of the shaft
- ✓ Clear glass, coloured glass or milky matte glass

Fermacell boards

- ✓ Classification according to ČSN EN 13 501-1 A2 – s1 d0
- ✓ European technical approval ETA -03/0050
- ✓ Mechanical strength test according to ČSN EN 81- 20:2015 (Inspection certificate I-63-0126/16/ZZ/T)



Colours:

- ✓ Standard colour is RAL 7032 with thickness 50 µm (we also offer other RAL colours – ask our sales department)

Anchorage:

- ✓ The structure is anchored at the level of the pit, in the platform and also in the head of the shaft by putting steel anchors into concrete

Revolutionary solution for covering the horizontal shaft profiles

- ✓ Covering material for horizontal profiles – PLALAM – it is galvanized steel sheet with PVC surface on the top + protective film
Alternatively – Stainless steel



10. Special lifts

Special lifts are designed and developed according to your special requirements

During the realization we pay attention to your special demands with regards to functionality, lift car dimensions and desirable usage of lift.

Examples

- ✓ Lifts with half-round glass wall
- ✓ „Aquarium” full-glass lifts
- ✓ Lift with openable ceiling

Lifts with half-round glass wall



„Aquarium” full-glass lift



11. Lifts design



12. LC *Elegant*

Lift cabin LC Elegant

- ✓ Cabin walls are made from two layers – galvanized steel sheet + decorative laminate
- ✓ Polyrey (Fr), which is hardened, abrasion resistant and high temperature resistant material with more than 2000 colours and motives
- ✓ Cabin floor is covered with Marmoleum, that contains 97% natural ingredients (flax seed oil, wood flour, pine rosins, jute, limestone and pigments)
- ✓ All other cabin details are made from Plalam



LC *Elegant*

Lift with cabin LC Elegant



13. LC *Exclusive*

Lift cabin LC Exclusive

- ✓ Premium lift cabin with mirror stainless steel details
- ✓ Cabin floor is covered with Marmoleum

This cabin walls has two options:

- ✓ Cabin walls from two layers – galvanized steel sheet + decorative laminate Polyrey (Fr), which is hardened, abrasion resistant and high temperature resistant material with more than 2000 colours and motives
- ✓ Cabin walls from stainless steel mirror or brushed



LC *Exclusive*

Lift with cabin LC Exsclusive



14.

LC *Exclusive* GLASS

Lift cabin LC Exclusive Glass

- ✓ Cabin walls are made of clear glass (view outside)
- ✓ All other details are from mirror stainless steel
- ✓ One, two or three glass walls
- ✓ If your lift is in glass elevator shaft, you have a nice view outside to a nature or city



LC *Exclusive* GLASS

Lift with cabin LC Exclusive Glass



15.

LC *Exclusive* ColorGlass

Glass design is a unique treat for the eyes.

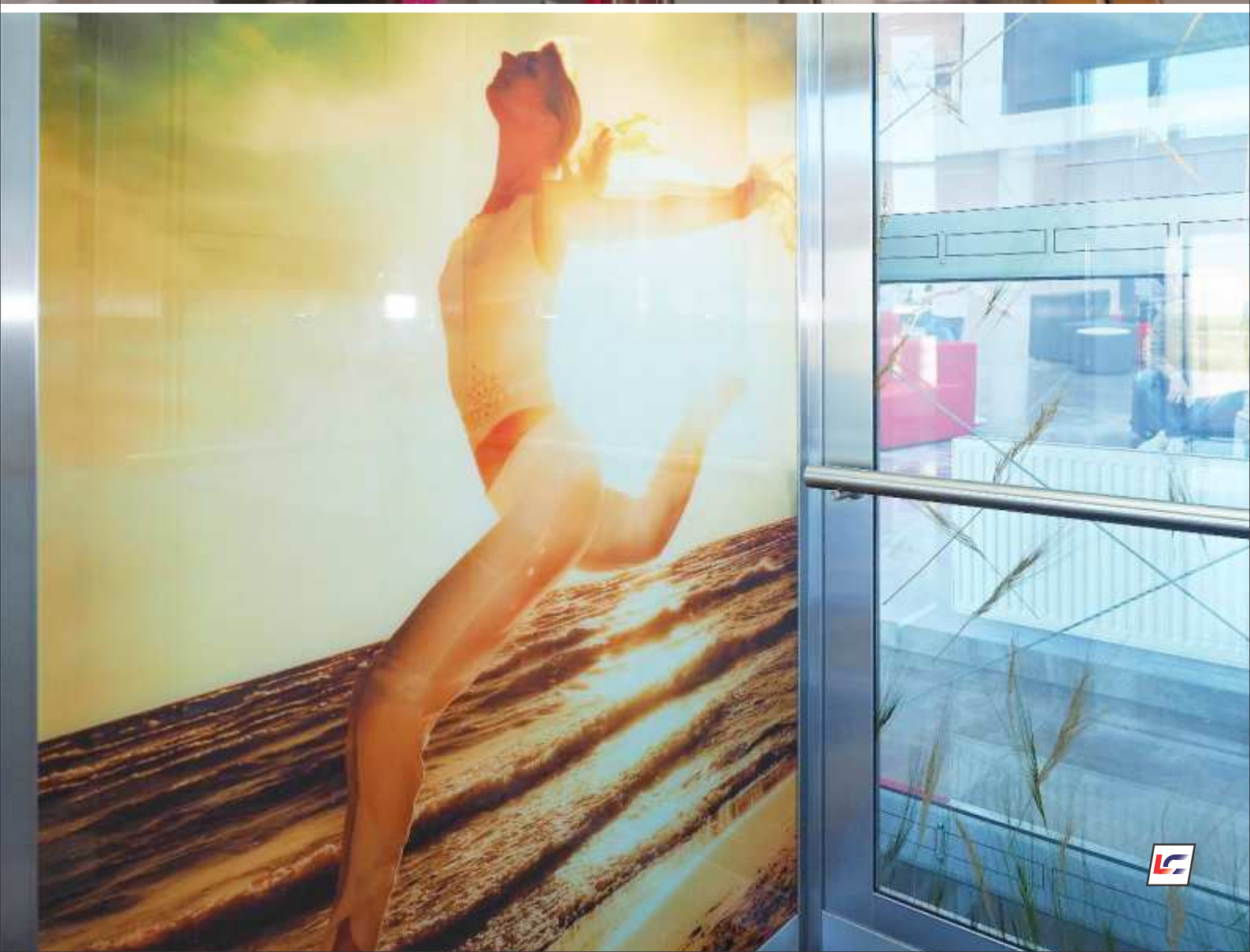
It is a modern technology that enables you to put your own photo or any other motive inside of your lift walls.

- ✓ Timeless, elegant and modern solution
- ✓ Technology that enables you to put your own photo inside of your lift walls
- ✓ Endless possibilities for design of your own lift.



LC *Exclusive* ColorGlass

Lift with cabin LC Exclusive Color Glass



16. LC *Classic*

If you want a cheap solution and you don't care about design

- ✓ basic lift cabin with basic equipment
- ✓ Lift cabin Classic is made from steel sheet Plalam, which is galvanized steel sheet with PVC surface on the top (5 colours)



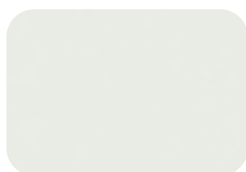
17. Colour sample

LG *Elegant* LG *Exclusive*

Cabin walls – decorative laminate **POLYREY** – hardened, abrasion resistant and high temperature resistant laminate



A095-Ardoise Oxydé (ROC)



B070-Blanc Megève (EPM)



C098-Chêne de Fil Naturel (Grain)



C135-Cumaru Clair Horizontal (EXM)



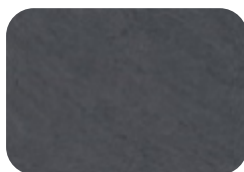
G029-Gris Tourterelle (EPM)



P122-Platine (ALG)



S030-Strass Blanc (Brihg)



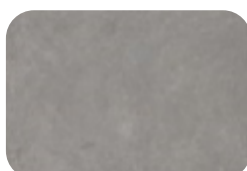
S049-Slate (ROC)



S069-Serpentin Blanc (BRI)



S070-Serpentin Noir (BRI)



T006-Tectonica (ROC)



T086-Textus Gris (EXM)



V014-Vinyle



G031-Genet

Floor - Marmoleum – floor that contains 97% natural ingredients (flax seed oil, wood flour, pine rosins, jute, limestone and pigments)



Marmoleum Black



Marmoleum Eiger



Marmoleum Granada



Marmoleum Henna



Marmoleum Serene Grey

LG *Classic*

Cabin walls – galvanized steel sheet with PVC surface on the top + protective film (PLALAM)



DT63



DT66



DT67



N1



PPS3



PPS12



F12PPS



PPS25

Floor – Altro
– PVC (vinyl) floor



ALTRO Black



ALTRO Bone



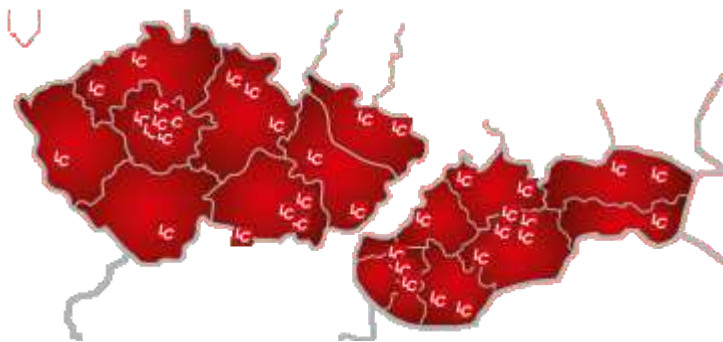
ALTRO Pewter Grey



ALTRO Viper



ALTRO Storm



Wide sales network

- + We are available in every single region of the Czech Republic and Slovakia
- + Lift installation and subsequent maintenance is done by partner companies, that ought to be authorised by Lift Components s.r.o.

You are sincerely welcomed to visit our showroom and testing tower, where you can see all our products and you can also try ride in our lifts.

In our showroom you can see:

- + All our lift cabins
- + Semi-automatic and automatic door
- + Machines, guide rails, lift model
- + Colour sample for lift cabins and door
- + Cabin equipment – mirrors, hand rails, seats, lighting ...

Contact us



www.lift-components.cz

LIFT COMPONENTS, s.r.o.

Na Novém poli 383/3, 733 01 Karviná - Staré Město

tel.: +420 596 311 393, +420 596 363 351, fax: +420 596 312 366

e-mail: liftcomponents@liftcomponents.cz

GPS: Loc:49°51'57.919"N , 18°30'34.899"E